

ASYA030GTEH

Please visit our webstore for full product and technical documentation 

Unit Type	Wall Mounted (Internal EEV)
Remote Controller	Option
Nominal Cooling Capacity (kW)	9.0
UK Total Cooling Capacity (kW)	6.7
UK Sensible Cooling Capacity (kW)	5.7
Nominal Heating Capacity (kW)	9.3
UK Heating Capacity (kW)	10.0
Height (mm)	340
Width (mm)	1150
Depth (mm)	280
Weight (kg)	18
Airflow Rate - Cooling - High (m3/h)	1440
Sound Pressure Level - Cooling - High (dB(A))	53
Sound Pressure Level - Cooling - Low (dB(A))	39
Refrigerant Type (Global Warming Potential)	R410A (2,088)
Liquid Pipe Size	3/8"
Gas Pipe Size	5/8"
Unit Power Supply	1Ph-230V-50Hz



Document Downloads

[Air Distribution](#)

[Airflow](#)

[Cooling Capacity](#)

[Dimensional Drawing](#)

[Electrical Characteristics](#)

[Heating Capacity](#)

[Installation Manual](#)

[Noise Curve](#)

[Operation Manual](#)

[Product Image](#)

[Spare Parts List All Pages](#)

[Specifications](#)

[Wiring Diagram](#)

Related Items

[UTYRNRZ5](#)

[UTYRCRYZ1](#)

[UTYRSRY](#)

[UTYRHRY](#)

[UTYLNHY](#)

[UTYTF SXZ1](#)

Touch Screen Remote Controller

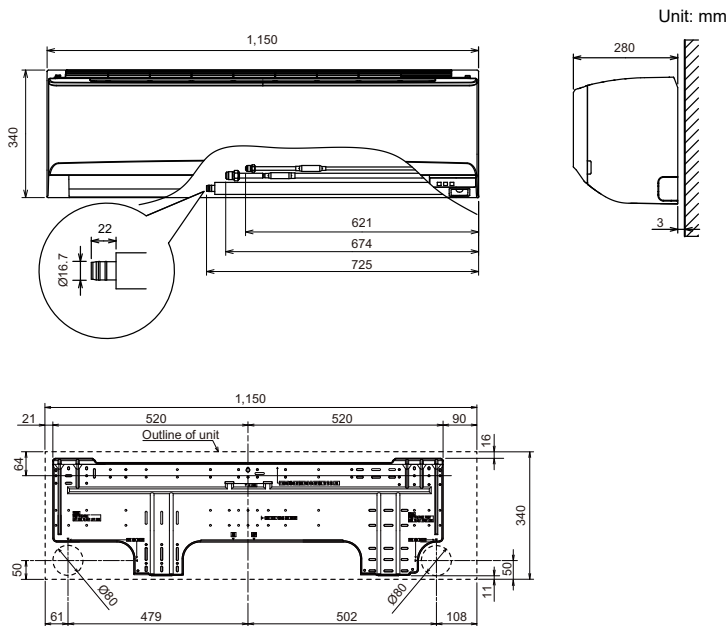
Compact Simple Remote controller

Simple Remote Controller (with Master Control)

Simple Remote Controller (without Master Control)

Wireless Remote Controller

Wireless LAN interface



*Specifications and design are subject to change without notice for further improvement.

*Actual products' colors may be different from the colors shown in this printed material.