

## 9. Function settings

To adjust the functions of this product according to the installation environment, various types of function settings are available.

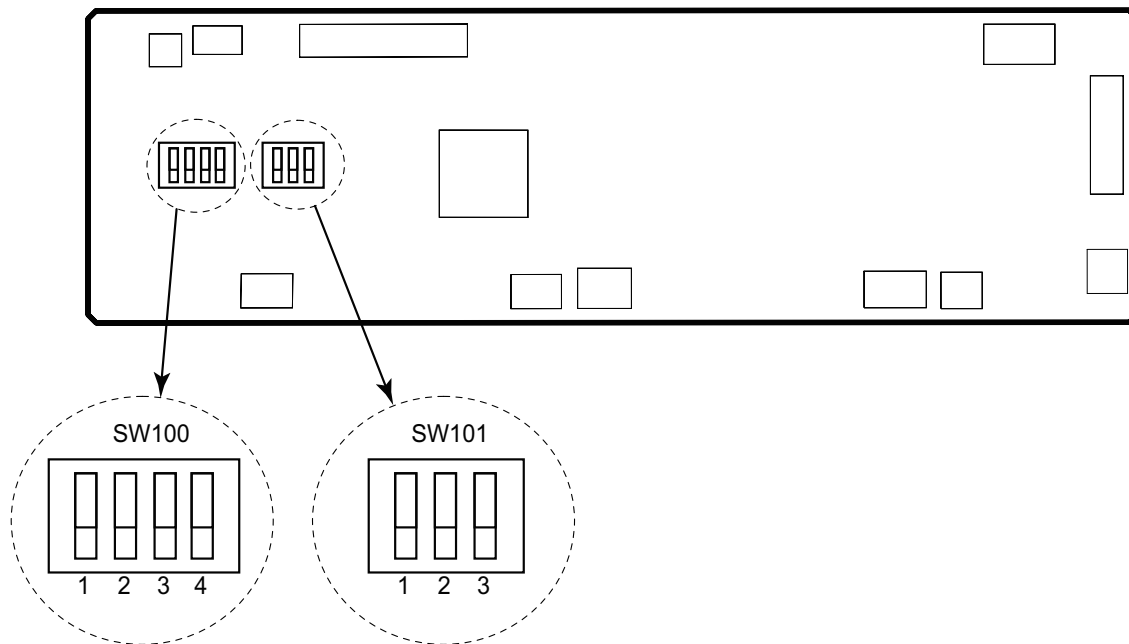
**NOTE:** Incorrect settings can cause a product malfunction.

### 9-1. Function settings on indoor unit

By using some components on the PCB, you can change the function settings.

#### ■ Component location

Components on the indoor unit main PCB used for the function settings are located as shown in the following figure.



## ■ DIP switch setting

### • SW100: Remote controller address setting

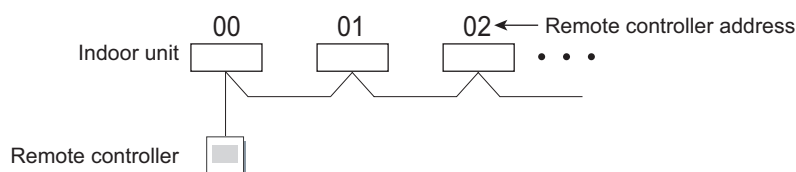
**NOTE:** Because this setting is normally done automatically when 2-core wired remote controller is installed, setting is unnecessary.

Multiple indoor units can be operated by using one wired remote controller.  
Set the unit number of each indoor unit.

| Remote controller address | DIP switch number |     |     |     | Factory setting |
|---------------------------|-------------------|-----|-----|-----|-----------------|
|                           | 1                 | 2   | 3   | 4   |                 |
| 00                        | OFF               | OFF | OFF | OFF | ◆               |
| 01                        | ON                | OFF | OFF | OFF |                 |
| 02                        | OFF               | ON  | OFF | OFF |                 |
| 03                        | ON                | ON  | OFF | OFF |                 |
| 04                        | OFF               | OFF | ON  | OFF |                 |
| 05                        | ON                | OFF | ON  | OFF |                 |
| 06                        | OFF               | ON  | ON  | OFF |                 |
| 07                        | ON                | ON  | ON  | OFF |                 |
| 08                        | OFF               | OFF | OFF | ON  |                 |
| 09                        | ON                | OFF | OFF | ON  |                 |
| 10                        | OFF               | ON  | OFF | ON  |                 |
| 11                        | ON                | ON  | OFF | ON  |                 |
| 12                        | OFF               | OFF | ON  | ON  |                 |
| 13                        | ON                | OFF | ON  | ON  |                 |
| 14                        | OFF               | ON  | ON  | ON  |                 |
| 15                        | ON                | ON  | ON  | ON  |                 |

#### NOTES:

- When connecting Polar 3-core wired remote controller, set the remote controller address in the order of 0, 1, 2, ....., and 15.
- When different type of indoor units (such as wall-mounted type and cassette type, cassette type and duct type, or other combinations) are connected using group control system, some functions may no longer be available.



### • SW101: Setting change prohibited

## 9-2. Function settings by using remote controller

Some function settings can be changed on the remote controller. After confirming the setting procedure and the content of each function setting, select appropriate functions for your installation environment.

### ■ Setting procedure by using remote controller

Remote controller is not attached for this product. For details of the installing remote controller, refer to following information.

- Overview information: Operating manual of the remote controller
- Setting procedure: Installation manual of the remote controller

### ■ Contents of function setting

Each function setting listed in this section is adjustable in accordance with the installation environment.

**NOTE:** Setting will not be changed if invalid numbers or setting values are selected.

### ● Function setting list

|     | Function no. | Functions   |
|-----|--------------|---|
| 1)  | 11           | Filter sign   |
| 2)  | 20           | Ceiling height  |
| 3)  | 22           | Outlet directions   |
| 4)  | 30/31        | Room temperature control for indoor unit sensor             |
| 5)  | 35/36        | Room temperature control for wired remote controller sensor |
| 6)  | 40           | Auto restart  |
| 7)  | 42           | Room temperature sensor switching                           |
| 8)  | 44           | Remote controller custom code                               |
| 9)  | 46           | External input control                                      |
| 10) | 48           | Room temperature sensor switching (Aux.)                    |
| 11) | 49           | Indoor unit fan control for energy saving for cooling       |
| 12) | 60           | Switching functions for external output terminal            |

#### 1) Filter sign

Select appropriate intervals for displaying the filter sign on the indoor unit according to the estimated amount of dust in the air of the room.

If the indication is not required, select "No indication" (03).

| Function number | Setting value | Setting description          | Factory setting |
|-----------------|---------------|------------------------------|-----------------|
| 11              | 00            | Standard (2,500 hours)       |                 |
|                 | 01            | Long interval (4,400 hours)  |                 |
|                 | 02            | Short interval (1,250 hours) |                 |
|                 | 03            | No indication                | ◆               |

**2) Ceiling height (For Compact cassette type only)**

Select the appropriate ceiling height according to the place of installation.

| Function number | Setting value | Setting description | Factory setting |
|-----------------|---------------|---------------------|-----------------|
| 20              | 00            | Standard            | ◆               |
|                 | 01            | High ceiling        |                 |

For the specific height for each setting value, refer to "Installation space" in Chapter 2. "Dimensions" on page 6.

**In case of cassette type models:**

The ceiling height values are for the 4-way outlet. Do not change this setting in the 3-way outlet mode.

9,000 Btu/h model cannot be installed in high ceiling. Do not change this setting.

**3) Outlet directions (For Compact cassette type only)**

Select the appropriate number of outlet directions according to the installation conditions.

| Function number | Setting value | Setting description | Factory setting |
|-----------------|---------------|---------------------|-----------------|
| 22              | 00            | 4-way               | ◆               |
|                 | 01            | 3-way               |                 |

**4) Room temperature control for indoor unit sensor**

Depending on the installed environment, correction of the room temperature sensor may be required. Select the appropriate control setting according to the installed environment.

The temperature correction values show the difference from the Standard setting "00" (manufacturer's recommended value).

| Function number     | Setting value       | Setting description | Factory setting      |                              |  |
|---------------------|---------------------|---------------------|----------------------|------------------------------|--|
| 30<br>(For cooling) | 31<br>(For heating) | 00                  | Standard setting     | ◆                            |  |
|                     |                     | 01                  | No correction 0.0 °C |                              |  |
|                     |                     | 02                  | -0.5 °C              | More cooling<br>Less heating |  |
|                     |                     | 03                  | -1.0 °C              |                              |  |
|                     |                     | 04                  | -1.5 °C              |                              |  |
|                     |                     | 05                  | -2.0 °C              |                              |  |
|                     |                     | 06                  | -2.5 °C              |                              |  |
|                     |                     | 07                  | -3.0 °C              |                              |  |
|                     |                     | 08                  | -3.5 °C              |                              |  |
|                     |                     | 09                  | -4.0 °C              |                              |  |
|                     |                     | 10                  | +0.5 °C              | Less cooling<br>More heating |  |
|                     |                     | 11                  | +1.0 °C              |                              |  |
|                     |                     | 12                  | +1.5 °C              |                              |  |
|                     |                     | 13                  | +2.0 °C              |                              |  |
|                     |                     | 14                  | +2.5 °C              |                              |  |
|                     |                     | 15                  | +3.0 °C              |                              |  |
|                     |                     | 16                  | +3.5 °C              |                              |  |
| 17                  | +4.0 °C             |                     |                      |                              |  |

### 5) Room temperature control for wired remote controller sensor

Depending on the installed environment, correction of the wire remote temperature sensor may be required. Select the appropriate control setting according to the installed environment.

To change this setting, set Function 42 to Both "01".

Ensure that the Thermo Sensor icon is displayed on the remote controller screen.

| Function number     |                     | Setting value | Setting description | Factory setting              |  |
|---------------------|---------------------|---------------|---------------------|------------------------------|--|
| 35<br>(For cooling) | 36<br>(For heating) | 00            | Standard setting    | ◆                            |  |
|                     |                     | 01            | No correction 0.0°C |                              |  |
|                     |                     | 02            | -0.5 °C             | More cooling<br>Less heating |  |
|                     |                     | 03            | -1.0 °C             |                              |  |
|                     |                     | 04            | -1.5 °C             |                              |  |
|                     |                     | 05            | -2.0 °C             |                              |  |
|                     |                     | 06            | -2.5 °C             |                              |  |
|                     |                     | 07            | -3.0 °C             |                              |  |
|                     |                     | 08            | -3.5 °C             |                              |  |
|                     |                     | 09            | -4.0 °C             |                              |  |
|                     |                     | 10            | +0.5 °C             | Less cooling<br>More heating |  |
|                     |                     | 11            | +1.0 °C             |                              |  |
|                     |                     | 12            | +1.5 °C             |                              |  |
|                     |                     | 13            | +2.0 °C             |                              |  |
|                     |                     | 14            | +2.5 °C             |                              |  |
|                     |                     | 15            | +3.0 °C             |                              |  |
|                     |                     | 16            | +3.5 °C             |                              |  |
| 17                  | +4.0 °C             |               |                     |                              |  |

### 6) Auto restart

Enables or disables automatic restart after a power interruption.

| Function number | Setting value | Setting description | Factory setting |
|-----------------|---------------|---------------------|-----------------|
| 40              | 00            | Enable              | ◆               |
|                 | 01            | Disable             |                 |

**NOTE:** Auto restart is an emergency function such as for power outage etc. Do not attempt to use this function in normal operation. Be sure to operate the unit by remote controller or external device.

### 7) Room temperature sensor switching

When using the wired remote controller temperature sensor, change the setting to "Both" (01).

| Function number | Setting value | Setting description | Factory setting |
|-----------------|---------------|---------------------|-----------------|
| 42              | 00            | Indoor unit         | ◆               |
|                 | 01            | Both                |                 |

00: Sensor on the indoor unit is active.

01: Sensors on both indoor unit and wired remote controller are active.

**NOTE:** Remote controller sensor must be turned on by using the remote controller.

**8) Remote controller custom code**

(Only for wireless remote controller)

The indoor unit custom code can be changed. Select the appropriate custom code.

| Function number | Setting value | Setting description | Factory setting |
|-----------------|---------------|---------------------|-----------------|
| 44              | 00            | A                   | ◆               |
|                 | 01            | B                   |                 |
|                 | 02            | C                   |                 |
|                 | 03            | D                   |                 |

**9) External input control**

"Operation/Stop" mode or "Forced stop" mode can be selected.

| Function number | Setting value | Setting description   | Factory setting |
|-----------------|---------------|-----------------------|-----------------|
| 46              | 00            | Operation/Stop mode 1 | ◆               |
|                 | 01            | (Setting prohibited)  |                 |
|                 | 02            | Forced stop mode      |                 |
|                 | 03            | Operation/Stop mode 2 |                 |

**10) Room temperature sensor switching (Aux.)**

To use the temperature sensor on the wired remote controller only, change the setting to "Wired remote controller" (01).

This function will only work if the function setting 42 is set at "Both" (01).

When the setting value is set to "Both" (00), more suitable control of the room temperature is possible by setting function setting 30 and 31 too.

| Function number | Setting value | Setting description     | Factory setting |
|-----------------|---------------|-------------------------|-----------------|
| 48              | 00            | Both                    | ◆               |
|                 | 01            | Wired remote controller |                 |

**11) Indoor unit fan control for energy saving for cooling**

Enables or disables the power-saving function by controlling the indoor unit fan rotation when the outdoor unit is stopped during cooling operation.

| Function number | Setting value | Setting description | Factory setting |
|-----------------|---------------|---------------------|-----------------|
| 49              | 00            | Disable             |                 |
|                 | 01            | Enable              |                 |
|                 | 02            | Remote controller   | ◆               |

00: When the outdoor unit is stopped, the indoor unit fan operates continuously following the setting on the remote controller.

01: When the outdoor unit is stopped, the indoor unit fan operates intermittently at a very low speed.

02: Enable or disable this function by remote controller setting.

**NOTES:**

- As the factory setting, this setting is initially activated.
- Set to "00" or "01" when connecting a remote controller that cannot set the Fan control for energy saving function or connecting a network converter.  
To confirm if the remote controller has this setting, refer to the operating manual of each remote controller.

## 12) Switching functions for external output terminal

Functions of the external output terminal can be switched. For details, refer to “External input and output”.

| Function number | Setting value | Setting description              | Factory setting |
|-----------------|---------------|----------------------------------|-----------------|
| 60              | 00            | Operation status                 | ◆               |
|                 | 01—08         | (Setting prohibited)             |                 |
|                 | 09            | Error status                     |                 |
|                 | 10            | Indoor unit fan operation status |                 |
|                 | 11            | External heater                  |                 |